

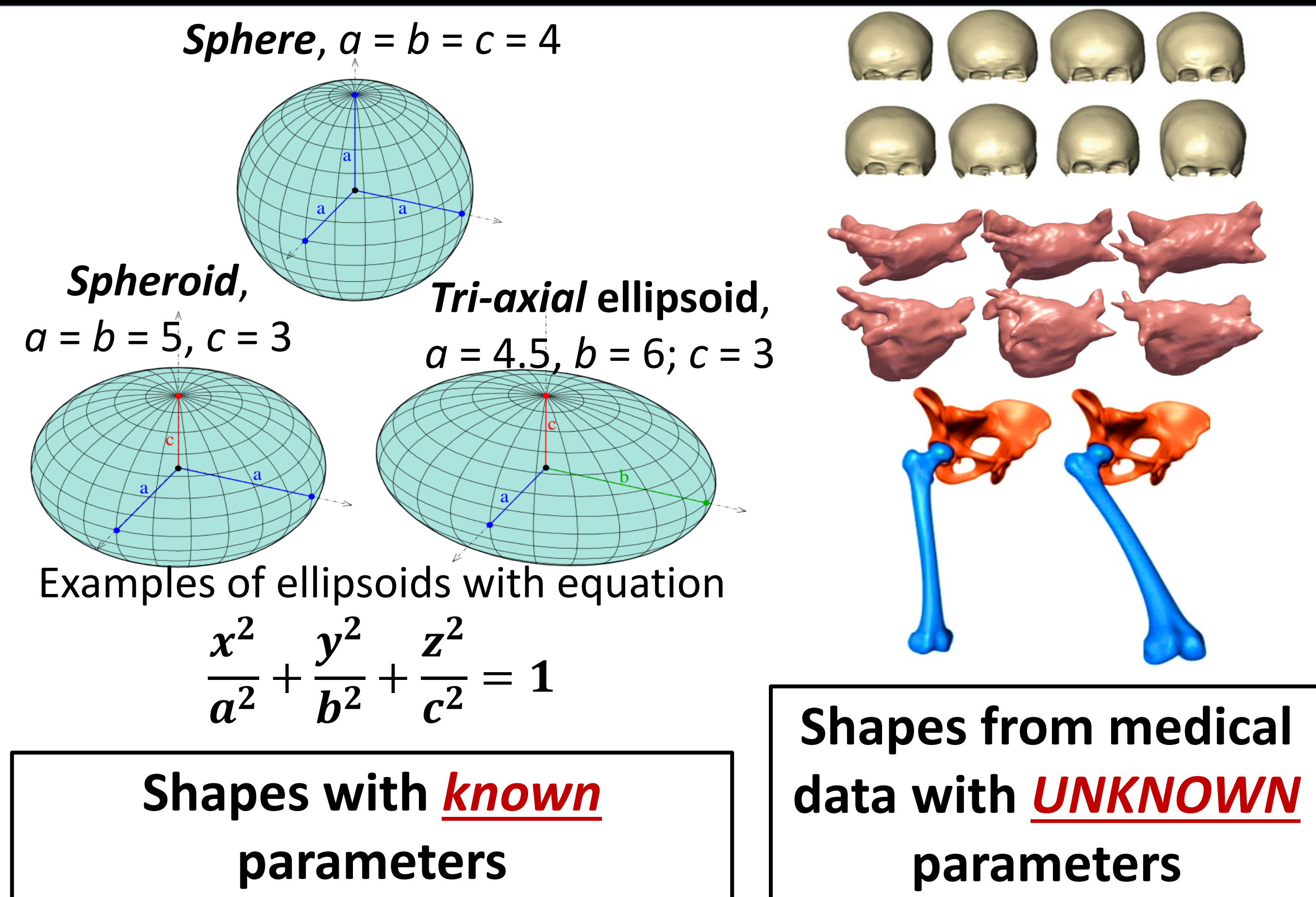


ShapeWorks: An Integrated Suite for Shape Representation and Analysis & more

Elhabian Lab

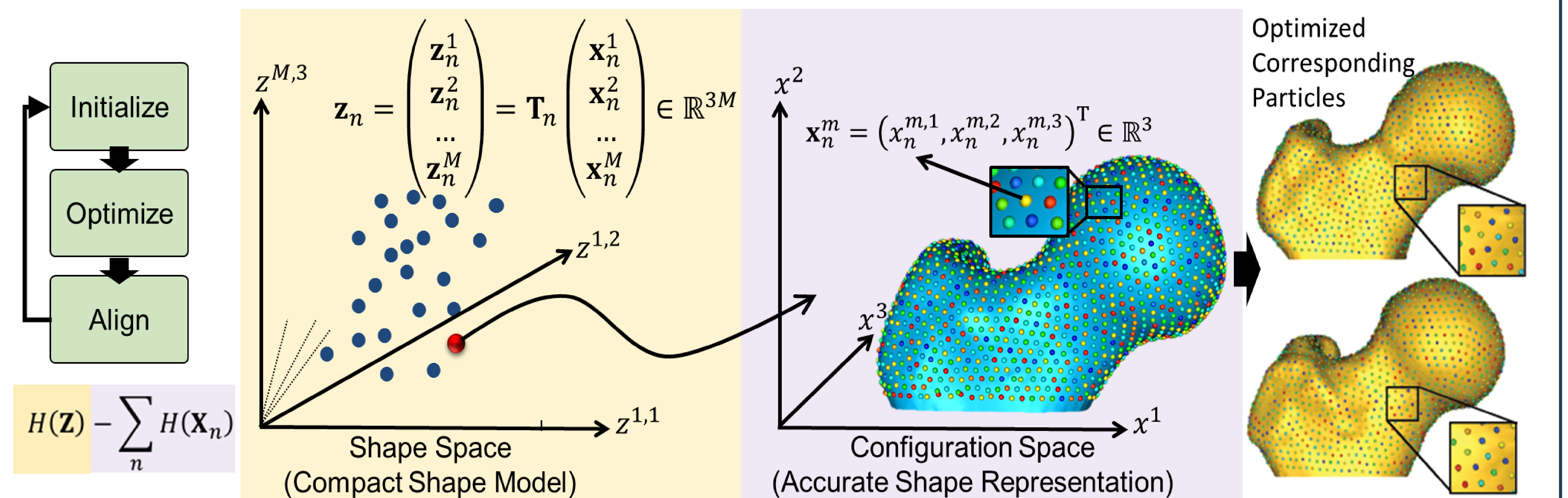


How to **quantify shape changes** and describe subject-specific anatomy in the context of a population?



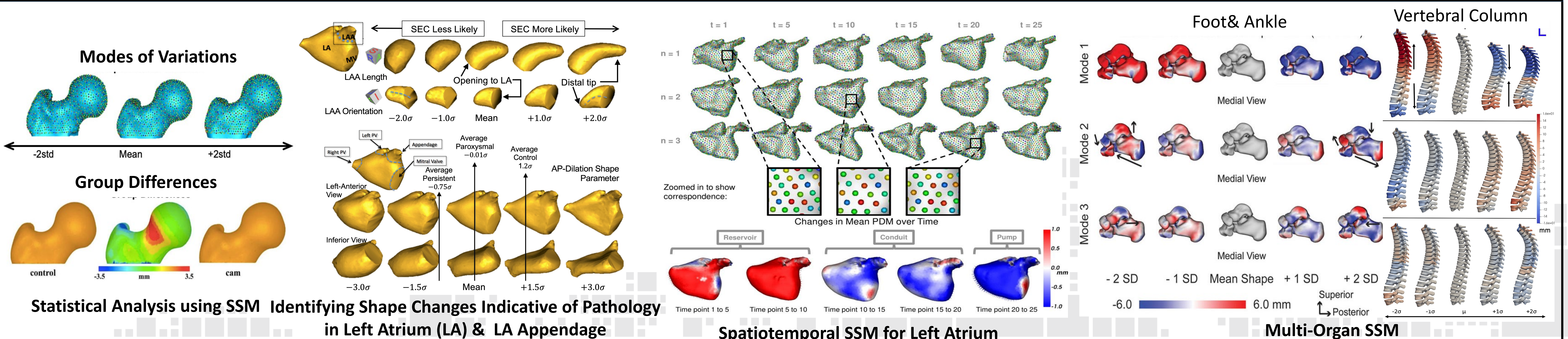
Statistical shape modeling (SSM) identifies population-specific parameterization from data, enabling the quantification of shape variations.

ShapeWorks is a free, open-source suite of software tools that constructs statistical shape models from anatomical shape population



- **ShapeWorks** enables efficient analysis and modeling of the shapes using landmark-based statistics
- **ShapeWorks** optimizes landmark positions to minimize the overall information content of the model (first term) while maintaining a good sampling of surface geometry (second term)

Applications of ShapeWorks



Acknowledgement: Supported by the National Institutes of Health grants: NIBIB-U24EB029011, NIAMS-R01AR076120, NHLBI-R01HL135568, NIBIB-R01EB016701, and NIGMS-P41GM103545

Download **ShapeWorks** and meet the research and development team using the QR code!

