

Eye-gaze Guided Alignment between Image and Text

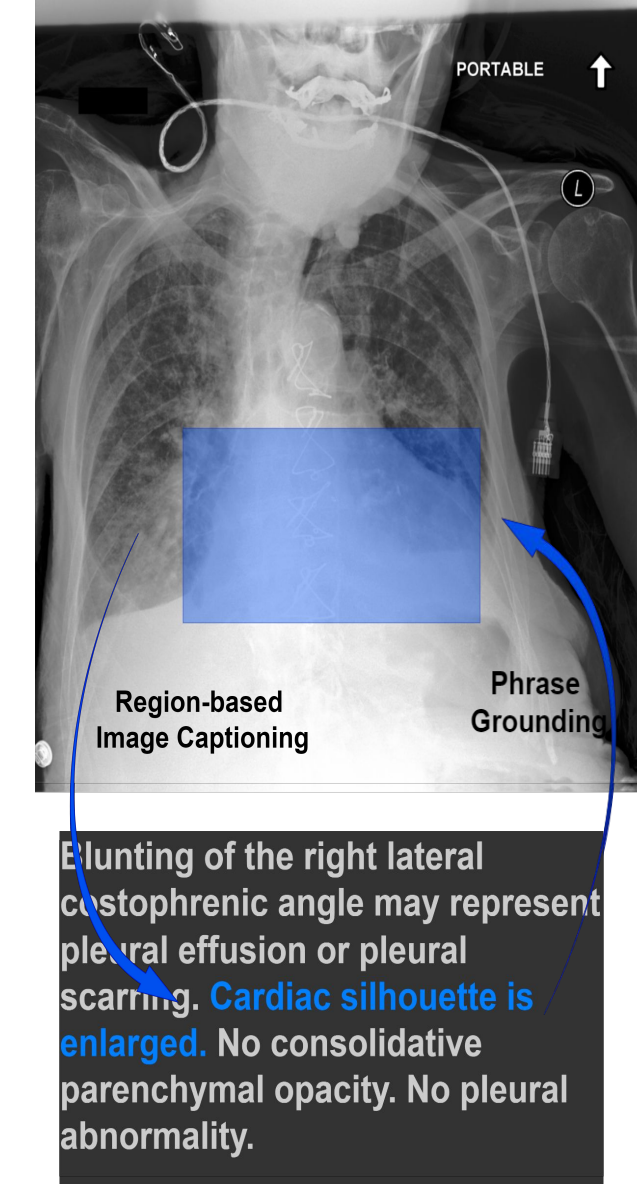
Elham Ghelichkhan, Tolga Tasdizen



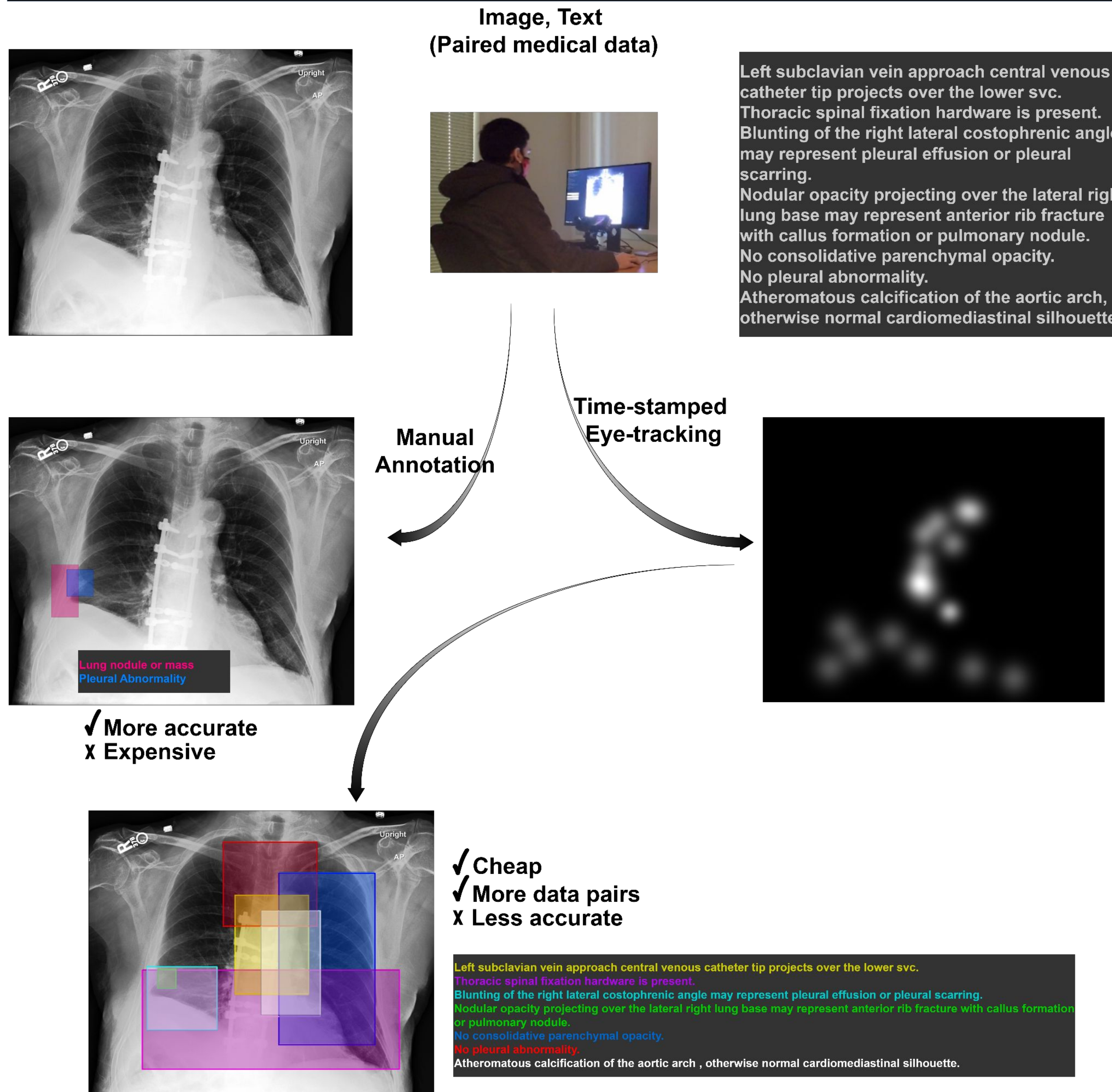
Introduction

Enhancing image-text alignment using eye-tracking data

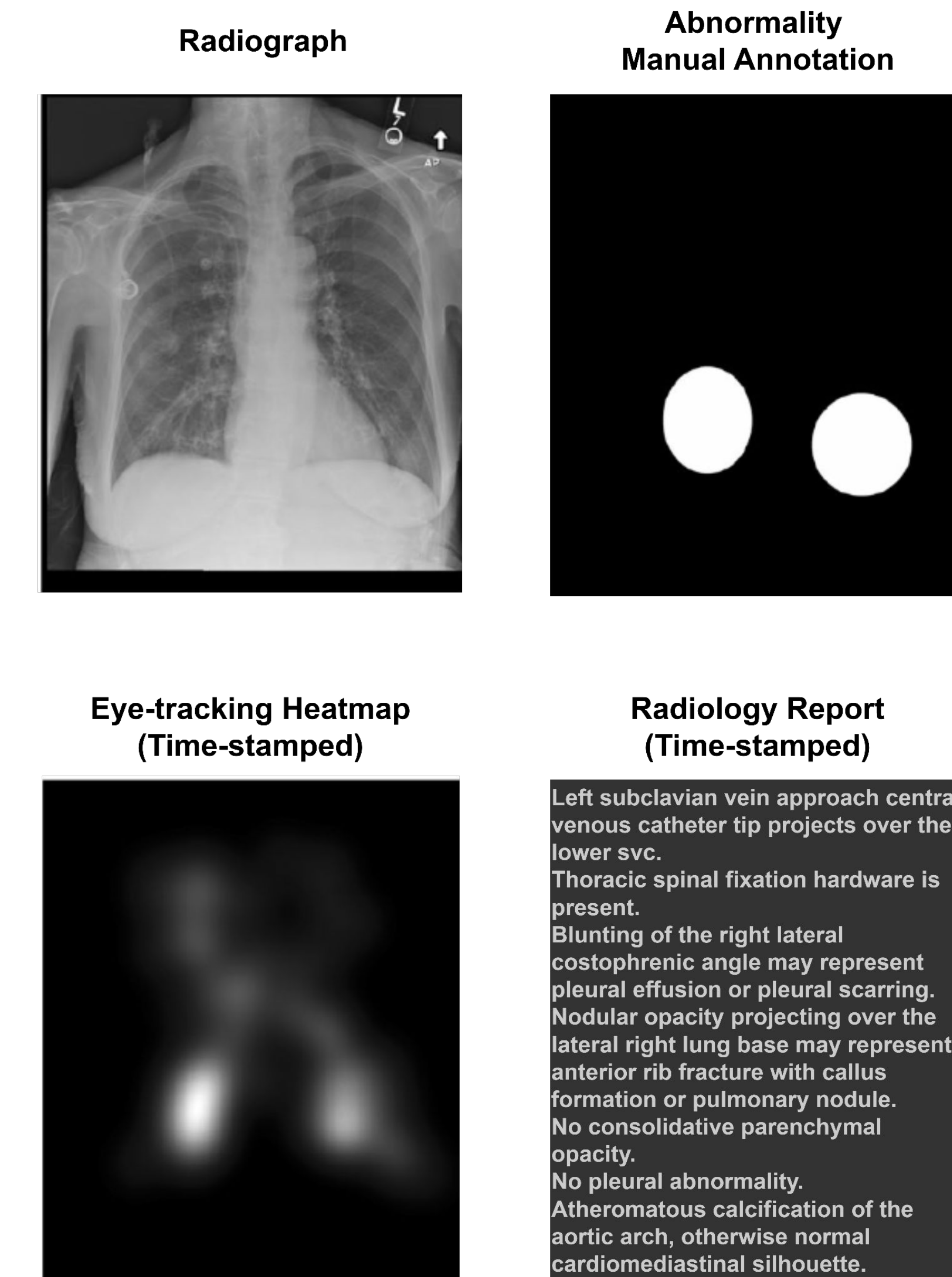
- Region-based image captioning**- provides initial medical interpretation given a medical image region.
- Phrase grounding**- provides image region where the given sentence is referring to.
 - Improving risk stratification
 - Decreasing diagnostic process time
 - Improving treatment planning



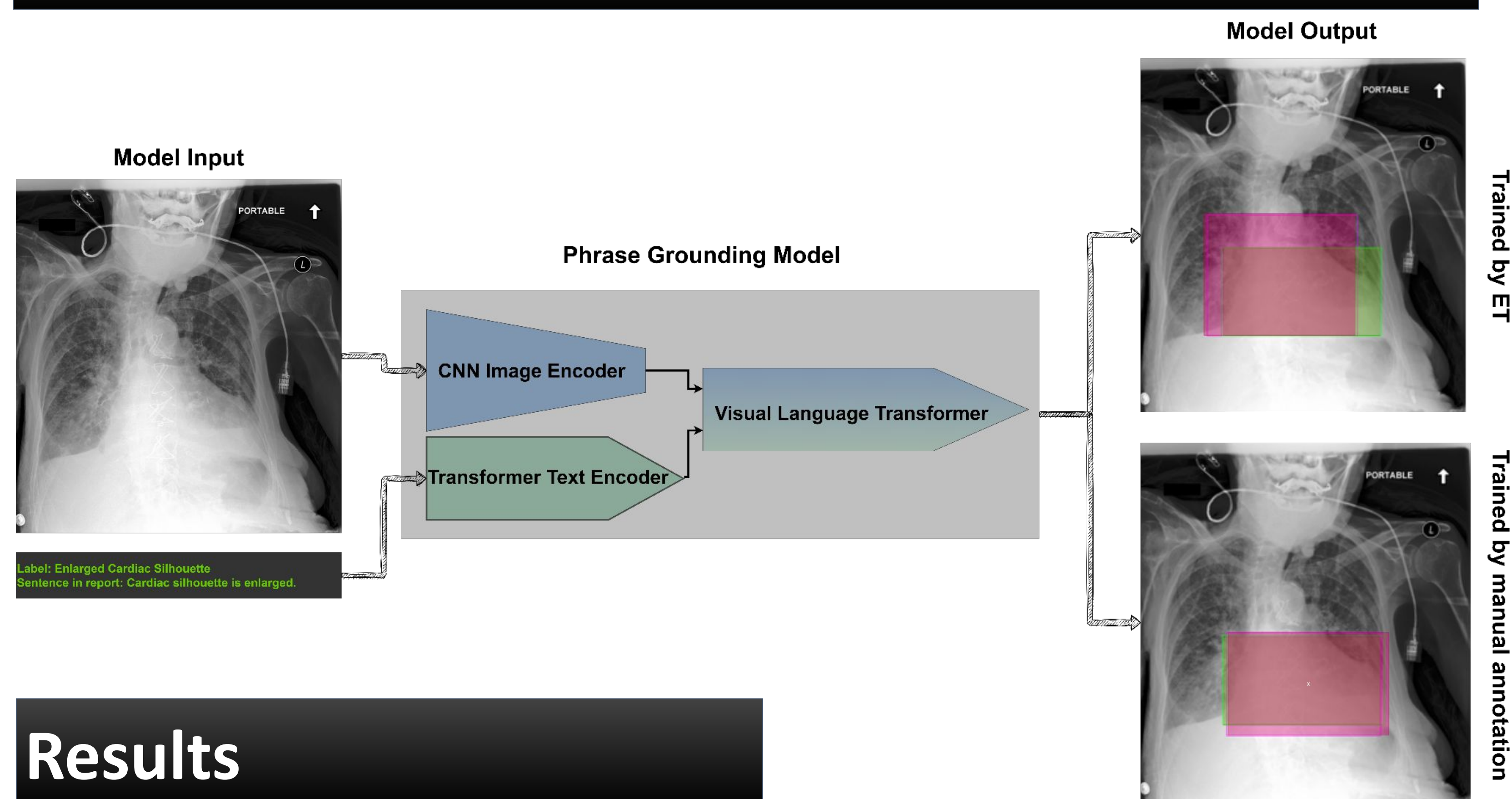
Motivation



Dataset: REFLACX



Methods

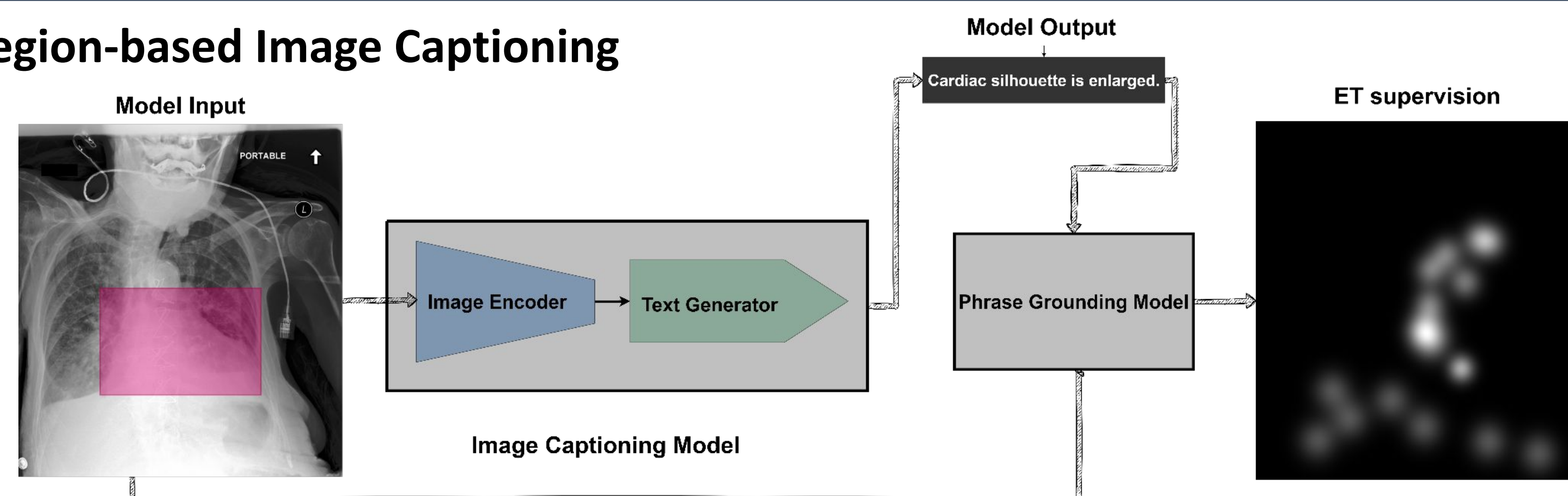


Results

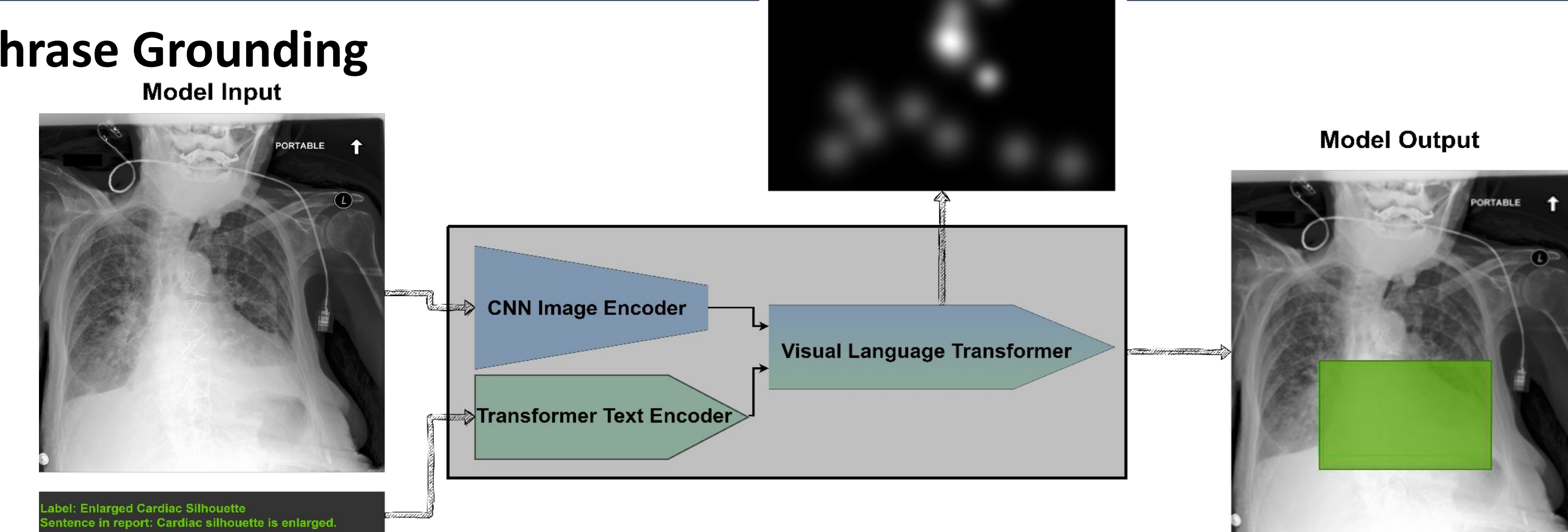
Train/ Test	mIoU	Acc.
Manual bbox/ Manual bbox	45.4	66.67
ET bbox/ Manual bbox	23.65	33.2
ET bbox/ ET bbox	36.07	55.85

Future Works

➤ Region-based Image Captioning



➤ Phrase Grounding



References

- [1] Ricardo Bigolin Lanfredi, Mingyuan Zhang, William F Auffermann, Jessica Chan, Phuong-Anh T Duong, Vivek Srikumar, Trafton Drew, Joyce D. Schroeder, and Tolga Tasdizen. Reflax, a dataset of reports and eye-tracking data for localization of abnormalities in chest x-rays. Scientific data, 9(1):350, 2022.
- [2] Johnson, A. E. W. et al. MIMIC-CXR, a de-identified publicly available database of chest radiographs with free-text reports. Scientific Data 6, 317, <https://doi.org/10.1038/s41597-019-0322-0> (2019).
- [3] Zhihao Chen, Yang Zhou, Anh Tran, Junting Zhao, Liang Wan, Gideon Su Kai Ooi, Lionel Tim-Ee Cheng, Choon Hua Thng, Xinxing Xu, Yong Liu, et al. Medical phrase grounding with region-phrase context contrastive alignment. In International Conference on Medical Image Computing and Computer-Assisted Intervention, pages 371–381. Springer, 2023.